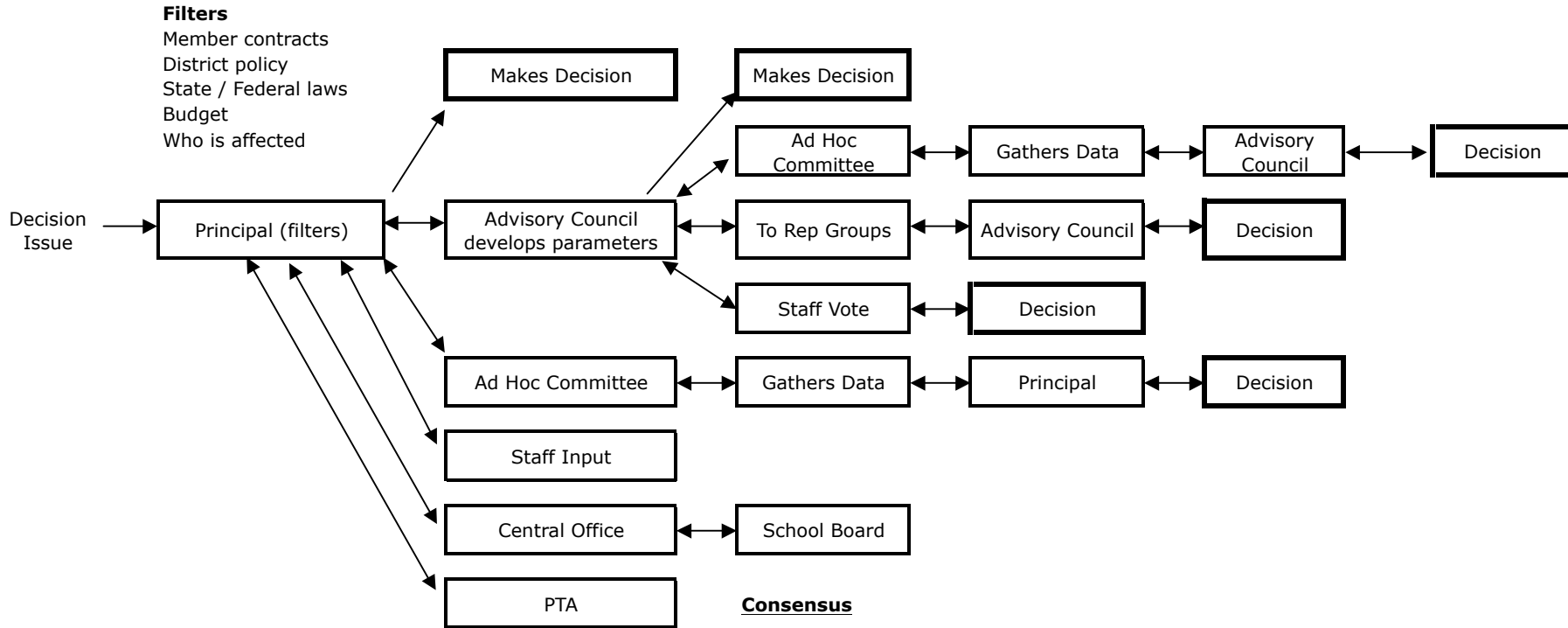


BRIARCREST DECISION MAKING MODEL

At each level decision maker needs to gather information and communicate progress and the decision to all members



Advisory Council Parameters for a decision

- Who will be affected?
- Who should be involved in making decision?
- What is timeline for decision?
- How will decision be made?
- Budget (if any)?
- Who will vote?

At each level people affected by decision will have opportunity for input.

Appeal

Any decision may be appealed by submitting a written request to Advisory Council

Modifications

Any decision may be modified by submitting modification request to Advisory Council

Voting

- Staff vote - 80% of current certificated voting staff = consensus
- Advisory Council vote - 2/3, with 2/3 present being a quorum

Consensus

Consensus is a decision that has been reached when at least 80% of the current certificated staff agree on a clear option and those who oppose it have had an opportunity to contribute to the discussion and have had their concerns / opinions heard by the group

All building staff agree to support the decision of the group.